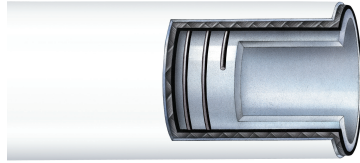


Rubber Fab

a Garlock Hygienic Technologies company

RFTFP TUF-FLEX®



Smoothbore PTFE Lined Hose with Synthetic Plies and Stainless Steel Wire Helix

TUBE: Seamless white PTFE

COVER: White silicone

REINFORCEMENT: Synthetic plies and stainless steel wire helix

TEMPERATURE: -40°F to 300°F

| Part Number | Hose ID Inch | Hose OD Inch | Bend Radius Inch | Max. Working Pressure @ 70°F psig | Vacuum Rating @ 70°F in. Hg. | Weight Per Foot |
|-------------|--------------|--------------|------------------|-----------------------------------|------------------------------|-----------------|
| 08RFTFP | 0.50 | 0.94 | 1.77 | 150 | FULL | 0.31 |
| 12RFTFP | 0.75 | 1.18 | 2.76 | 150 | FULL | 0.41 |
| 16RFTFP | 1.00 | 1.42 | 3.54 | 150 | FULL | 0.51 |
| 24RFTFP | 1.50 | 1.97 | 5.51 | 105 | FULL | 0.84 |
| 32RFTFP | 2.00 | 2.44 | 7.09 | 105 | FULL | 1.07 |

Rubber Fab recommends a Rubber Fab factory crimp for this product.

Features

- Extreme flexibility
- Superior cleanability
- Excellent thermal properties
- Ultra smooth bacteria free tube
- Static grounding available
- Resistant to repetitive dynamic cycling
- Autoclavable
- Phthalate free

Applications

- Load cell
- CIP/SIP cleaning
- Filling equipment
- Sampling systems
- Dosing and filling machines
- Fermentation lines
- Food and beverage processing
- Pharmaceutical processing
- Chemical transfer

Hose Certifications

- USP Class VI
- FDA 21 CFR 177.1550
- 3-A Sanitary Standards



26 Brookfield Drive • Sparta, New Jersey 07871

973.579.2959 • 866-442-2959 Toll Free • 973.579.7275 Fax • www.rubberfab.com