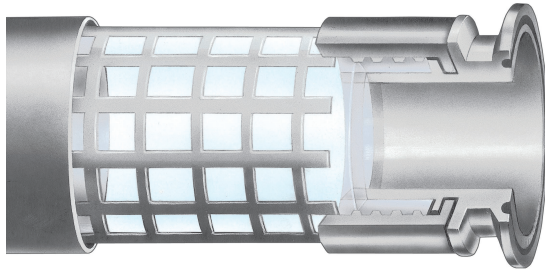


Rubber Fab

a Garlock Hygienic Technologies company

RFCSG



Caged FEP Sight Gauge

TEMPERATURE: -25°F to 300°F

END CONNECTIONS: 316L stainless steel sanitary Tri-Clamp®

Part Number	Hose ID Inch	Hose OD Inch	Wall Thickness	Max. Working Pressure @ 70°F
16RFCSG	1.00	1.25	0.125	250 psi
24RFCSG	1.50	1.75	0.125	200 psi
32RFCSG	2.00	2.35	0.175	100 psi

This product is factory fabricated.
Consult factory for individual length limits.

Features

- High pressure
- Liquid level indicators
- Sturdy, favorable in high stress applications
- High and low temperature rated
- Smooth, non-stick surface cleans easily and promotes minimal pressure drop
- Non-contaminating
- Will not impart taste or odor
- Shatterproof tube
- Will not discolor
- Unaffected by ultraviolet or sunlight

Certifications

- 3-A Sanitary Standards
- FDA 21 CFR 177.1550
- USDA
- USP Class VI

